

CITIES OF MAKING

URBAN EUROPE

2017 - 2019 (30 months)

Brussels

LATITUDE
PLATFORM FOR URBAN RESEARCH
AND DESIGN

VUB VRIJE
UNIVERSITEIT
BRUSSEL

ULB UNIVERSITÉ
LIBRE
DE BRUXELLES



actors
Governance
spatial uses

London



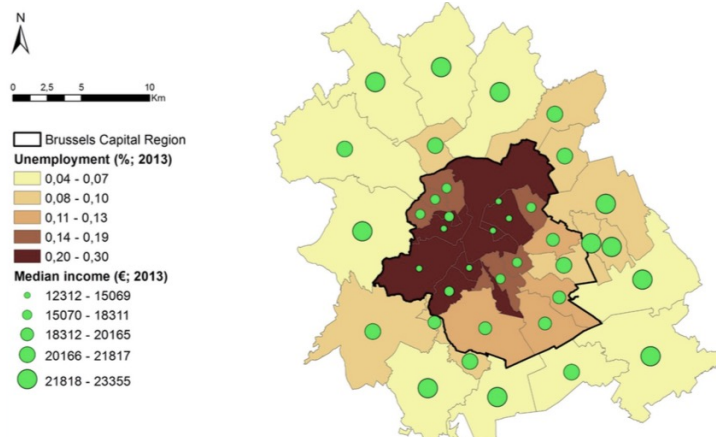
RSA
21st century enlightenment

materials
Technology
flows

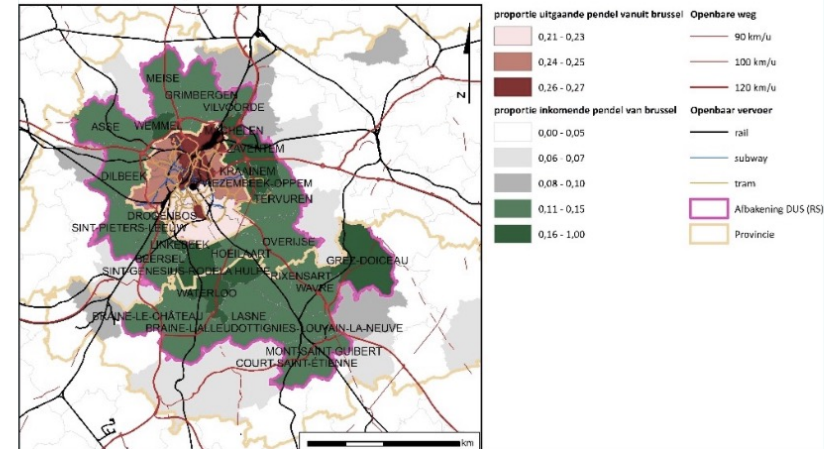
Rotterdam

 **TU Delft**

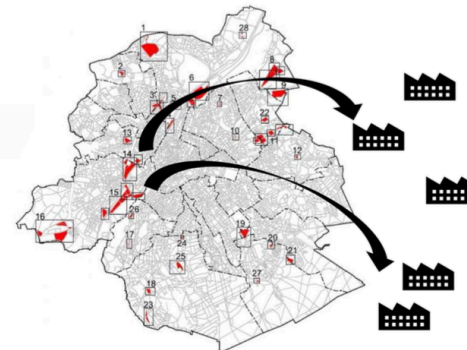
Conditions
Physical space



Daily urban system (reverse commuting)



OGSO
Ondernemingsgebied voor Stedelijke Ontwikkeling
= vorm van 'upzoning'



Une définition?

Manufacture: the making of articles on a large scale using machinery / a specified branch of industry

Production Activities (PRAS)

Artisanal activities, high-tech activities, industrial activities, production of material services and intangible goods. The management or administrative works, the storage and the shops which are the accessory, are considered to be productive activities.

Craft activities: activities of production where the creation, the transformation and the maintenance of the movables is mainly applied in way manual and being able to come along with a direct selling in public.

Industrial activities: activities of mechanized production concerning the manufacturing or the transformation (processing) of movables or the exploitation of sources of energy.

mid 16th cent. (as noun, denoting something made by hand): from French (re-formed by association with Latin *manu factum* 'made by hand'), from Italian *manifattura*.

One definition for the three cities?

Local or global definition?

Which planning document should be followed locally (PRAS, PRDD)?

BMiX Matrix

type / name of economic activities (horizontal row / X axis)

economic activities location:

- 1) existing in the Brussels Region
- 2) existing in the fringes of the Brussels Region (1st crown)
- 3) not existing (desired)

economic activities categories:

- 1) high tech
 - 2) low tech
-
- 1) principal
 - 2) secondary
 - 3) ancillary

characteristics of economic activities (vertical column / Y axis)

organization and structure

Fixed capital
Productive capital
Invested capital
Employees number
Workers total number
High skilled workers number
Low skilled workers number
Workers profile (skills)
Total persons engaged
Commuters
Wages to workers
Total emoluments

Net Value Added
Ownerships
Rent Paid
Interest Paid
Net Income
Profit
machineries tools (type)
machineries tools (number)
related services (network)

inputs

energy consumption
type of energy required
water consumption
type of incoming goods
quantity of incoming goods (per type)
Total Input

outputs

type of outgoing goods
quantity of outgoing goods (per type)
recyclable leftovers
non-recyclable leftovers
pollutants (noise, chemicals...)
Total Output

planning context

applied planning tools (ZUS, ZEMU etc.)
subsidies
date of construction / occupation
1st location / relocation

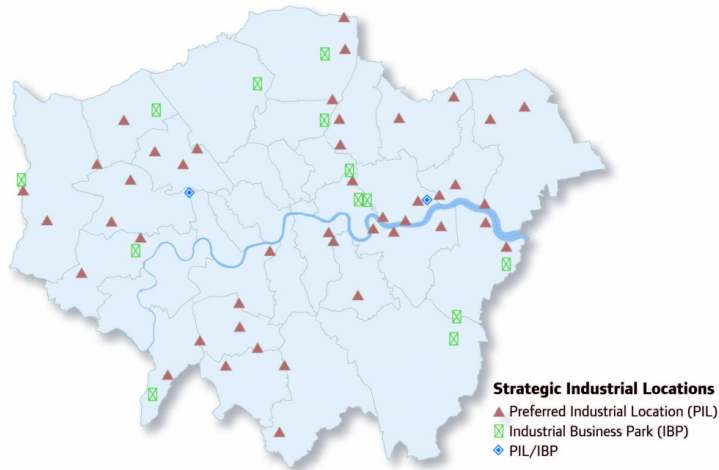
spatial and architectural

total plot ground occupation (sqm / ha)
outdoor spaces (sqm)
indoor volume (m3)
indoor spaces (sqm)
working machineries tools (sqm)
technical spaces (sqm)
offices (sqm)
services (sqm)
building type
dense urban context (compatible/ not compatible)
preferred context (industrial zone / isolated / city centre / indifferent...)
infrastructural proximity type (highway / airport / port...)
infrastructural proximity distance (radius km)
public transport proximity type (train station / bus stop / metro stop...)
public transport proximity distance (radius km)
private transport services proximity type (parking / park and ride / bike parking...)
private transport services proximity (radius km)

London



London



Source GLA: © Crown copyright. All rights reserved. Greater London Authority 100032216 (2011)

OPDC

HARINGEY

Declining industry?

GLA predicts 88% loss of manufacturing jobs from 129,000 in 2011 to 15,500 in 2050

Changing nature of industry

Shift from larger scale, consolidated industries to smaller, subdivided units

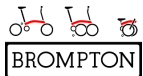
Population growth and property speculation

Pressure to accommodate growing population, and profit motive for landowners

Zoning to mixed use development

Some protection of strategic industrial sites, but general move to mixed use developments

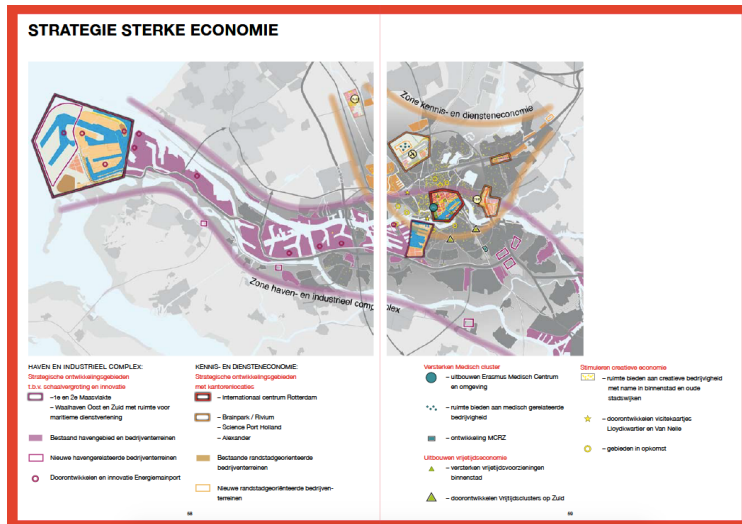
GREATERLONDONAUTHORITY
MAYOR OF LONDON



Rotterdam-Den Haag



Rotterdam-Den Haag



ENERGY TRANSITION

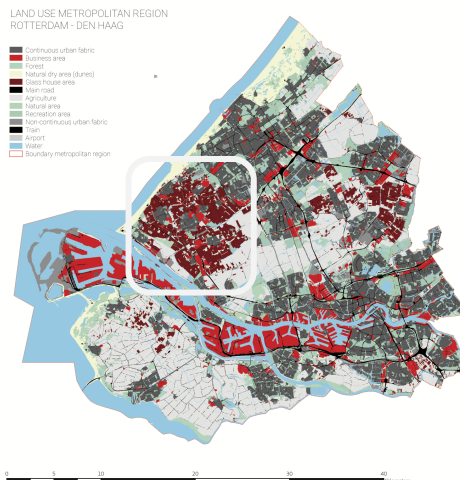
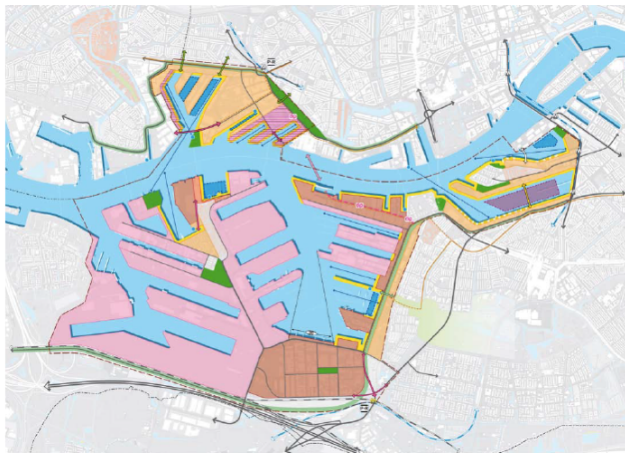
**CLIMATE CHANGE
RESILIENCE**

CIRCULAR ECONOMY

**THIRD INDUSTRIAL REVOLUTION
THE NEXT ECONOMY**

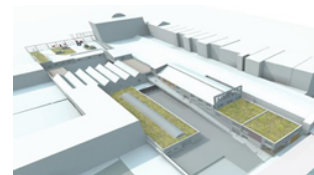
STADHAVENS

WESTLAND

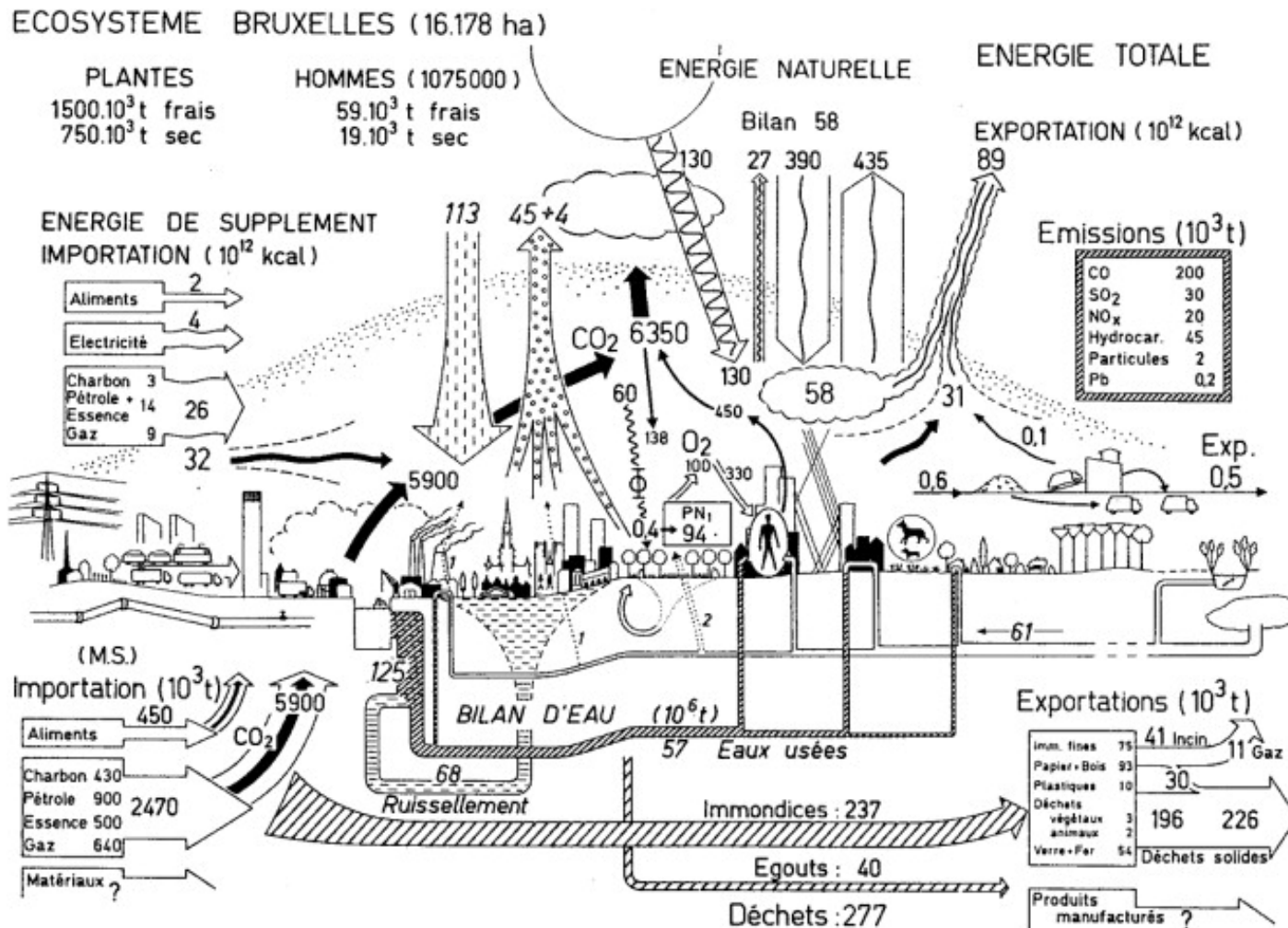


understanding networks and relations, more detailed scale incl. grain size of parcellation, types of mixture

Bruxelles



Approche typologique vs systémique



The urban metabolism of Brussels, Belgium in the early 1970s
Duvigneaud and Denaeyer-De Smet 1977.